

# The King's CE School

*Aspire, Believe and Achieve Together*



Newsletter 31 Friday 10th June 2022

Dear Parents and Carers

As we start this final half term of the school year, there is so much to look forward to! It is an important time to assess the learning and progress of all our students, to celebrate the achievements and successes from the year and to look forward to next year chapter.

This morning we have held our Celebration for year 11 and we have enjoyed looking back, with them, at the special and poignant moments along their journey with us so far. It was an opportunity to thank the tutors, especially those who have been with the year group from year 7, Mrs Preece, Mrs Kudlacik, Mrs Manser who was their Head of Year in Year 7 and to thank Mrs Buckle who has done a magnificent job in leading the year group since year 8, through the pandemic and beyond. Many of our year 11 students will be joining our 6th Form and we look forward to seeing them at the Induction days in July.

Over the coming weeks, there are a lot of enrichment and extra-curricular activities planned. The key dates for your diary are below. The detailed arrangements will be sent out in separate letters for each event.

Tuesday 14 <sup>th</sup> June and Wednesday 15 <sup>th</sup> June	Year 7	Geography trip to Tettenhall Village
19 <sup>th</sup> and 20 <sup>th</sup> June	Year 10	Bronze DoE expedition
w/b 20 <sup>th</sup> June	Year 12	Work experience week
Thursday 23 <sup>rd</sup> June	All year groups	Pride of King's Awards
Friday 24 <sup>th</sup> June	Year 10	Year 10 <a href="#">Exam results day</a>
<b>Monday 27<sup>th</sup> June</b>	<b>All year groups</b>	<b>Staff Development Day School closed to all pupils</b>
Wednesday 29 <sup>th</sup> June	Year 11	Prom
Wednesday 29 <sup>th</sup> June	Year 12	Art and Photography trip to Dudley Zoo
Thursday 30 <sup>th</sup> June	Year 11	Year 12 Induction
Thursday 30 <sup>th</sup> June	Year 13	Final Leavers' Service and Celebration
Friday 1 <sup>st</sup> July	Year 13	Alton Towers Celebration Trip
Wednesday 6 <sup>th</sup> – Friday 8 <sup>th</sup> July	Year 6	Induction days
Thursday 14 <sup>th</sup> July	All Years	End of Year Show Performance
Friday 15 <sup>th</sup> July	Year 10	Virtual Work Experience
Friday 15 <sup>th</sup> July	Years 7 – 9	Reward Trip to Drayton Manor
Monday 18 <sup>th</sup> – Tuesday 19 <sup>th</sup> July	All Years	Activities Week
Wednesday 20 <sup>th</sup> July	All Years	Sports day
<b>Thursday 21<sup>st</sup> July</b>	<b>All years</b>	<b>End of term – Early Closure</b>

As part of our taught curriculum, every year group is timetabled a fortnightly PSHE lesson, (Personal, Social, Health Education). The programme of study, planned in response to the Department for Education's statutory guidance, covers a broad range of topics. It is regularly reviewed to ensure that it is relevant and responds to what our students are facing in their day to day lives. A copy of the programme for this half term can be found on our website.

We want to finish the year well and continue to insist on high standards for every one of our pupils in their approach to learning, their behaviour for learning and their presentation for learning.

Thank you for your partnership in this as we continue to work together.

Joy Langley

Interim Principal



## Contact Details

Telephone 01902 558333

Miss Joy Langley Interim Principal

E-mail [admin@kingswolverhampton.co.uk](mailto:admin@kingswolverhampton.co.uk)



[kingswolverhampton](https://www.facebook.com/kingswolverhampton)

[@kingsschoolwlv](https://twitter.com/kingsschoolwlv)

# The King's CE School

*Aspire, Believe and Achieve Together*



Newsletter 31 Friday 10th June 2022

## Can you help bring water and hope to Gawugu village in Northern Ghana?

As you know, in April this year I travelled with a small group of Methodists to Ghana where we were met with warmth and joy everywhere we went. After spending a few days on the South Coast, we travelled to the North of the country where the climate is drier and resources are more scarce.



This is Nalogni village, near Yendi. Some of you donated to the provision of eighty school desks for the primary school there, a gift which was an answer to prayers for the teachers at the school, who were wondering how they were going to carry out the upcoming exams.

Life in Nalogni was transformed a few years ago by the provision of a borehole. Access to water improves health and the time saved travelling long distances to collect water means children spend more time in school.



The people of Gawugu village, near Tamale, don't have access to clean water. They have to walk long distances to shallow rivers and muddy streams to collect water for drinking, washing, cooking and for their crops. Water which they share with cattle, sheep and goats.

Not only does this make them ill, but the time they spend collecting water reduces the time they can spend working, growing crops and going to school. For just £3500 a bore hole can be dug in Gawugu village, bringing health and prosperity to the whole area. Because we have links through the Methodist Church all the way to Gawugu village itself, we know that every penny donated will go directly to the digging of the bore hole.



If you would like to help bring health and hope to the people of Gawugu, you can make a donation by following this link:

<https://www.crowdfunder.co.uk/p/water4gawugu>

Mrs J Kudlacik

School Chaplain

### Contact Details

Telephone 01902 558333

Miss Joy Langley Interim Principal

E-mail [admin@kingswolverhampton.co.uk](mailto:admin@kingswolverhampton.co.uk)



kingswolverhampton

@kingsschoolwlv

# The King's CE School

*Aspire, Believe and Achieve Together*



Newsletter 31 Friday 10th June 2022

## Congratulations to our Year Stars of the Week

Year 7 Render  
Year 8 Cienna  
Year 9 Anuoluwapo  
Year 10 Williams  
Year 11 Deanne  
Year 12 Samuel  
Year 13 Dominik



## Risk Assessments

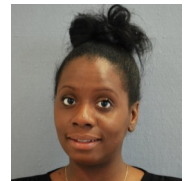
If your child has an injury which may impact on them moving around school, a risk assessment must be completed with Mrs Badger before they should return to school.

Please contact [s.badger1@kingswolverhampton.co.uk](mailto:s.badger1@kingswolverhampton.co.uk) to make an appointment.

Many thanks

Mrs Badger

Safeguarding Manager.



## Congratulations to our House Stars of the Week

York Abdul  
Lichfield Alfie  
Canterbury Nazan



Extra-Curricular Activity	Day	Time	Location	Staff
Y12 & Y13 Charity Committee	Tuesday	1.20pm - 1.40pm	1.21	MAN
Drama Club	Tuesday	1.10pm - 1.40pm	G8	SHO
5 a side Football	Tuesday	1.10pm - 1.40pm	Sports Hall	GAN / PUG

## Congratulations to our Tutor Groups of the Week

7 YCRO  
8 LVAN  
9 YMCC  
10 YMAD  
11 CKUD  
6 CCMG

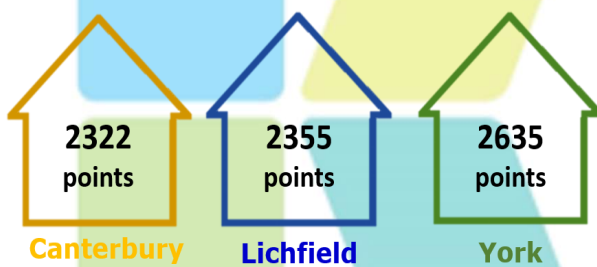


## Creative Extra-curricular clubs

	Monday	Tuesday	Wednesday	Thursday
Lunchtime 1.10-1.40	Really important for ALL D of E students to attend this session!	Drama club G8 (SHO) Meeting for Year 9 athletes in PE	Choir G6 KS3 Art club G3	Jewellery Club Tech building - T4 Inter-house - Main Hall
Afterschool 3.35-4.35	Duke of Edinburgh (outside Technology building) Dance fitness (dance studio)	Athletics competition Year 9 (at Aldersley)	Football training	King's Theatre Group G8 GCSE Art & Photography G3

Take Responsibility, Be respectful, Show Empathy, Choose Forgiveness

## HOUSE TOTALS THIS WEEK



## Inter-house Calendar

When	Where	Activity	Extra Info
Thurs 9th June	Main Hall	Dodgeball	Y9 and Y10
Thurs 9th June	G3	Art competition	Y7, Y8, Y9 and Y10
Thurs 16th June	Theatre	Drama competition	Y7, Y8 and Y9
Thurs 23rd June	G3	Art competition	Y7, Y8, Y9 and Y10
Thurs 23rd June	G5	Music competition	Y7, Y8 and Y9
Thurs 30th June	Main Hall	Dodgeball	Y7 and Y8



If you want to get involved...  
Turn up at 1.10!

### Contact Details

Telephone 01902 558333

Miss J Langley Interim Principal

E-mail [admin@kingswolverhampton.co.uk](mailto:admin@kingswolverhampton.co.uk)



kingswolverhampton

@kingsschoolwlv

# The King's CE School

*Aspire, Believe and Achieve Together*



Newsletter 31

Friday 10th June 2022

## We are Hiring.....

We have many exciting opportunities to join our team at The King's!

We currently have vacancies for the following positions:

- Teacher of Psychology and Sociology
- Teacher of Design Technology
- Teacher of Science
- Safeguarding Manager
- Professional Tutor

Please click [here](#) for a Candidate Information Pack and Application Form.

We look forward to hearing from you!



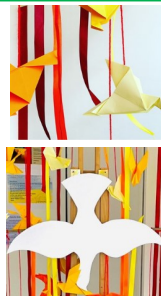
## Congratulations!

We would like to congratulate our Industrial Cadet team in Year 8 for being nominated for the Best STEM Solution Award for their work in designing a flood proof building.

The group have worked extremely hard over the last few months. Well done!



## Pentecost



7K have created origami doves for the Pentecost display in the foyer of our school, representing the descent of the Holy Spirit upon the followers of Jesus Christ while they were in Jerusalem.



## Creative Faculty News.....

Our Year 9 boys attended the Wolverhampton Athletics competition held at Aldersley, pupils took part in both the track and field events. Resulting in some top positions, the pupils showed great determination and independence when setting themselves up for the events and when taking part. We also took two sixth form leaders which contributed by placing the students in the order that they finished the event in, it was commented on by four members of staff from other schools at how amazing and helpful they were; the sixth formers showed a polite nature and communicated clearly with other schools. A credit to the school! Well done to all involved.



Duke of Edinburgh sessions for the upcoming Bronze expedition are well underway. This week the students looked at their finalised groupings and route for the June expedition. As well as learning how to set up tents.

Miss Pugh

Head of Creative Faculty, Lichfield House Leader and CTL of Physical Education



Our Year 9 pupils celebrated a special Pentecost Eucharist on Thursday.

Thank you to Rev Douglas who led our services.



## Contact Details

Telephone 01902 558333

Miss Joy Langley Interim Principal

E-mail [admin@kingswolverhampton.co.uk](mailto:admin@kingswolverhampton.co.uk)



[kingswolverhampton](https://www.facebook.com/kingswolverhampton)

[@kingsschoolwlv](https://twitter.com/@kingsschoolwlv)



# The King's CE School

*Aspire, Believe and Achieve Together*



Newsletter 31 Friday 10th June 2022

## From the Chaplain....

When is it that you feel most alive and inspired? Who is it that supports and encourages you, giving you confidence?

It was during the Jewish festival of Shavuot (Pentecost), when Jews from many countries had travelled to Jerusalem and were renewing their commitment to the Lord, re-reading his commandments and re-affirming their faith that our bible reading for this week is set. Jesus disciples, not just the twelve but a hundred or so men and women who had followed him, were gathered together. They had been fearful at the time of Jesus' arrest and death, scared and perplexed by his resurrection appearances, full of joy as they saw him ascend into heaven and now they were hiding away, nervous of the Jewish authorities, waiting for a sign.

That's where they were, gathered together in an upstairs room, when the Holy Spirit came. It filled the house with the sound of a violent wind. They saw tongues of fire reaching out to each one of them and they felt the immense power of the Holy Spirit in and amongst them... but there is no mention of fear here. Instead, these same disciples who had been hiding away in a safe space, were now bubbling over with confidence and eloquence, able to speak with authority and make themselves understood in a whole range of previously foreign languages... they were transformed.

But the power of God's Spirit didn't stop there: it flowed through them, empowering them as they flooded out of the house and into the streets and it made an impact on all who heard them. So much so, that three thousand people were added to the group of believers that day.

The really good news is that this same Holy Spirit, the encouraging and inspiring power and love of God himself, is available to each one of us. 'God says: I will pour out my Spirit on everyone', Peter announces, quoting the prophet Joel. There is no distinction made between men and women, old and young, rich and poor, Jew or gentile... all people are invited to receive God's power and love, enabling, empowering and encouraging them to be fully alive and flourish as the people God created us to be.

I return to my initial questions: When is it that you feel most alive and inspired? Who is it that supports and encourages you, giving you confidence? Who or what helps you to be the confident, creative and fruitful person you were created to be?

Words for this week:

As we hear again the story of God's Holy Spirit poured out at Pentecost, we consider who encourages us and builds us up.



### Contact Details

Telephone 01902 558333

Miss Joy Langley Interim Principal

E-mail [admin@kingswolverhampton.co.uk](mailto:admin@kingswolverhampton.co.uk)

## The Theme for Worship w.c 13th June

Hannah: trusting in God

1 Samuel 1:4-20



At The King's CE School we believe that everyone is unique and created in God's image. We enable all to achieve their God-given potential; to grow, learn and aspire; to transform their lives and the lives of others and to journey in faith without limits within a unified, respectful and harmonious community.



[kingswolverhampton](https://www.facebook.com/kingswolverhampton)

[@kingsschoolwlv](https://twitter.com/kingsschoolwlv)