

The King's CE School

Aspire, Believe and Achieve Together



Newsletter 29 Friday 20th May 2022

Ofsted Section 48 Inspection.

Dear Parents and Carers

As you know, we have been expecting an Ofsted Section 48 Inspection. This is an inspection that schools designated as having a religious character have to undergo on a regular basis. For The King's, as a Church of England school, this Inspection is referred to as a SIAMS Inspection which stands for School Inspection of Anglican and Methodist Schools. The purpose of the inspection is to evaluate **"how effective is the school's distinctive Christian vision, established and promoted by leadership at all levels, in enabling pupils and adults to flourish?"**

The school has now been informed that we will have our SIAMS inspection on Tuesday 24th May and Wednesday 25th May. There will be one inspector in school who will observe how we live, lead and learn The King's way.

There is no formal parent questionnaire but please do share your feedback on how we at The King's live out our vision:

At The King's CE School we believe that everyone is unique and created in God's image. We enable all to achieve their God-given potential; to grow, learn and aspire; to transform their lives and the lives of others and to journey in faith without limits within a unified, respectful and harmonious community.

Please email my PA, Mrs Louisa Gauld-Crichton l.gauld-crichton@kingswolverhampton.co.uk with any comments you would like us to share with the Inspector or to speak with the Inspector directly.

Yours faithfully,

Joy Langley

Interim Principal



Contact Details

Telephone 01902 558333

Miss Joy Langley Interim Principal

E-mail admin@kingswolverhampton.co.uk



kingswolverhampton

@kingsschoolwlv

The King's CE School

Aspire, Believe and Achieve Together



Newsletter 29 Friday 20th May 2022

Congratulations to our Year Stars of the Week

Year 7 Raeesah
Year 8 Lyam
Year 9 Olamide
Year 10 Raja
Year 11 Cherish
Year 12 Glaudia
Year 13 Divine



Risk Assessments

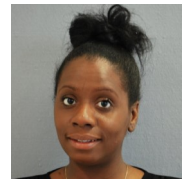
If your child has an injury which may impact on them moving around school, a risk assessment must be completed with Mrs Badger before they should return to school.

Please contact s.badger1@kingswolverhampton.co.uk to make an appointment.

Many thanks

Mrs Badger

Safeguarding Manager.



Congratulations to our House Stars of the Week

York Olamide
Lichfield Ivan
Canterbury Raeesah



House Worship

Year 9 are leading our House Worship this week on the Parable of the Good Samaritan and the command to love our neighbour.



Congratulations to our Tutor Groups of the Week

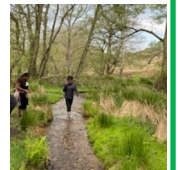
7 YCRO
8 LVAN
9 LMIT
10 CKEY
11 CKUD
6 LTAT



Duke of Edinburgh

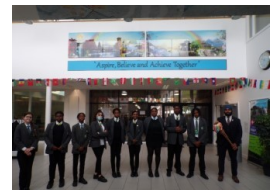


Well done to everybody on our Duke of Edinburgh practice walk on Sunday.
An amazing Team effort!



Wolverhampton Community Baton

We have had the Wolverhampton Community Baton come to our school this morning arriving from Woodthorne. They performed an excellent dance to us, before we then did a relay around the track and a drum performance. It then got passed onto St Edmunds, as it makes its way around Wolverhampton.



Take Responsibility, Be respectful, Show Empathy, Choose Forgiveness

HOUSE TOTALS THIS WEEK



Contact Details

Telephone 01902 558333

Miss J Langley Interim Principal

E-mail admin@kingswolverhampton.co.uk



[kingswolverhampton](https://www.facebook.com/kingswolverhampton)

[@kingsschoolwlv](https://twitter.com/kingsschoolwlv)

The King's CE School

Aspire, Believe and Achieve Together



Newsletter 29 Friday 20th May 2022

Lunchtime and After School Clubs

Extra-Curricular Activity	Day	Time	Location	Staff
STEM Club Y8	Monday	1.20pm – 1.40pm	G.12	DOL +VAN
Yr7 and 8 – Law club	Monday	1.10pm -1.25pm	2.11	HAR
Steel pans/ ukulele	Monday	1.10pm -1.40pm	Dance Studio	MCA
KS3 Basketball	Monday	1.10pm -1.40pm	Sports Hall	PUG
KS3 Football	Monday	3.35pm -4.35pm	Outside	PUG
Netball	Monday	3.35pm-4.35pm	Outside	BUC
BTEC Sport KS4 Catch Up	Monday	3.35pm -4.35pm	2.9	GAN / KEY
Y12 & Y13 Charity Committee	Tuesday	1.20pm -1.40pm	1.21	MAN
School Food Champions (Y8+9)	Tuesday	3.30pm -4:30pm	Food Tech	DOL
Drama Club	Tuesday	1.10pm -1.40pm	G8	SHO
5 a side Football	Tuesday	1.10pm -1.40pm	Sports Hall	GAN / PUG
Week 1 KS3				
Week 2 KS4				
KS4 Football	Tuesday	3.35pm -4.35pm	Outside	GAN
Volleyball	Tuesday	3.35pm -4.35pm	Sports Hall	KEY
Y7 Reading Club	Wednesday	1.20pm -1.40pm	1.16	HOP
KS4 Truth Space	Wednesday	1.20pm -1.40pm	Faith Centre	KUD
Choir	Wednesday	1.10pm -1.40pm	G6	MCA
KS3 Art club	Wednesday	1.10pm -1.40pm	G3	HAT & BAL
Games club	Wednesday	1.10pm -1.40pm	Sports Hall	KEY / PUG
Jewellery club	Thursday	1.10pm -1.40pm	Tech building	MOU
Inter-house Sports competitions	Thursday	1.10pm -1.40pm	Sports Hall	PUG
The King's Theatre Club	Thursday	3.35pm -4.35pm	G8	MCA and SHO
Maths Drop in All years	Thursday	1.10pm - 1.40pm	G21	EAS
Eco-Club KS3+4	Thursday	1.20pm - 1.40pm	Garden (1.14 wet weather)	DOL + KUD
KS3 Gardening	Friday	1.20pm - 1.40pm	Garden	KUD
KS4 Basketball	Friday	1.10pm-1.40pm	Sports Hall	GAN

We are Hiring.....

We have many exciting opportunities to join our team at The King's! If you would like further information and an application form please visit our website:

<https://www.kingswolverhampton.co.uk/vacancies>



NEW VACANCIES ON OUR WEBSITE!

Contact Details

Telephone 01902 558333

Miss Joy Langley Interim Principal

E-mail admin@kingswolverhampton.co.uk

Important Information on Attendance

Any student who has attendance lower than 90% during the academic year is classed by Government as being a persistent absence pupil, there is no distinction between reasons for absence, (authorised or unauthorised).

At The King's CE School student attendance is expected to be above 96% throughout the academic year.

Please ensure you contact school on every day of absence by 9.30am and you may be requested to supply medical evidence to school to allow them to authorise the absence. Medical evidence can be in the form of any of the following:

- **An appointment card or letter (this may only require half a day absence)**
- **A dated prescription from a Hospital, Doctor or Dentist**
- **A label from medication prescribed by a Doctor or Dentist**

Attendance direct line 01902 556828 or Option 1 of menu.

Attendance is monitored on a weekly basis by myself and our Attendance Officer Mrs Barratt.

Donna Cox

Education Welfare Officer.

Year 7 Parent's Evening

It was wonderful to see so many Parents at Year 7 Parent's Evening on Wednesday. We had some amazing feedback from our What 3 words would you use to describe The King's CE school? Survey.

Thank you all for your feedback.

Mrs Douglas
Head of Year 7 & 8.



kingswolverhampton

@kingsschoolwlv

The King's CE School

Aspire, Believe and Achieve Together



Newsletter 29 Friday 20th May 2022

Dear Parents,

RE: Upcoming webinars for parents - *How to Help Your Child's Essay Writing*

As you are aware on Monday 23rd the award winning Elevate Education will be delivering an hour long Ace Your Exam's session. During the session they will learn about how to improve exam preparation, fixing mistakes, allocation of time and exam room techniques. We're excited to announce that on Tuesday 24th May 6-7pm Elevate will be hosting its next Parent Webinar. Feedback to the series so far has been fantastic, so don't miss out the next instalment in the series. Elevate works with our students, delivering high impact workshops on study skills, motivation, wellbeing, and exam preparation. By tuning into their webinar series, you will learn how to better support your children at home through reinforcing the skills they learn at school.

Tuesday 24th May (6-7pm)
How to Help Your Child's Essay Writing

[Register for free here](#)

Here's what we will be showing you in this session:

- The biggest challenges in essay writing and how to overcome them;
- How to break down and analyse a question to understand what the examiner is looking for;
- The musts and must-nots of essay structure.

I've also taken more than one strategy or tip from each webinar, applied them and found them a win - plotting fun first and doing tasks (practice that song once on the guitar, study that section) rather than time (20mins of guitar or 1 hour studying) are two of my favourites!

The webinar is run **live online from 6 – 7pm** where the presenter will share Elevate's key research and skills, and will conduct a live Q&A so you can ask them questions directly.

Should you have questions or would like to contact Elevate directly, their details are listed below.

01865 987 732

charlotte@elevateeducation.com

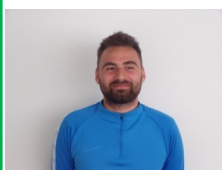
<https://get.elevatecoaching.info/uk/schoolwebinar>

www.facebook.com/ElevateParentsUK/

Kind regards

Mr Gain

Head of Year 10



elevate
education

Contact Details

Telephone 01902 558333

Miss Joy Langley Interim Principal

E-mail admin@kingswolverhampton.co.uk



kingswolverhampton

@kingsschoolwlv

The King's CE School

Aspire, Believe and Achieve Together



Newsletter 29 Friday 20th May 2022

From the Chaplain....

'Who is my neighbour?' a religious teacher asked Jesus, referring to the command to 'Love your neighbour as you love yourself'. The parable that Jesus told in response defined a neighbour not by who they are but by how they act. A neighbour is someone who cares, who goes out of their way for you, who is there for you in your hour of need. The command to love your neighbour was never intended to limit our care to the few people who live near us, look like us or share our values or faith, but it is a command to act generously and to care for whoever might need our support and encouragement.

The Parable of the Good Samaritan would have shocked Jesus' Jewish listeners that day. It was almost scandalous that he would have chosen a despised Samaritan as the hero of the story whilst the religious leaders were depicted as caring more about their own reputations and ritual cleanliness than the life of the robbers' victim. When Jesus asked at the end of the story, which man had acted like a neighbour, the religious teacher couldn't even bring himself to say the word 'Samaritan' preferring to mumble 'The one who was kind to him'.

Again and again in the Bible there are examples of God shocking us with his ability to bless and redeem and see the potential in people who society has written off as a lost cause. People whose behaviour and lifestyles fall short of social expectations. People who don't come from the right race or class. People who are an embarrassment because of their mental illness or because their disability is a clear sign that they must have offended God in some way. Again and again, God shows us that his love and generosity have no limits and that nobody is to be excluded from his care. And by asking us to love our neighbour, God is asking us to care as he does, without limits and without conditions.

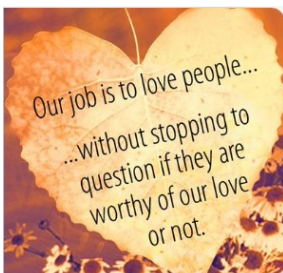
Our neighbours are the people we meet and interact with, or walk past, day by day. But in this era when the whole world has become a global village and when we receive news from distant continents within seconds, our neighbours are also right across the world. Who is God asking you to love today? Who is God reminding you of in quiet moments, who needs your help or your care?

Regularly in my own thoughts at the moment are the villagers of Nawugu in northern Ghana, who gave us such a warm welcome when I visited at Easter, but who even today live without a fresh water supply. For just £3500 their lives would be transformed. I pray that God will show me a way to support them with their need and all of us with the individuals and the communities God gives us to love.



Amen

Words for this Week



The Theme for Worship w.c 23rd May

The Parable of the Talents

Matthew 25: 14-30



At The King's CE School we believe that everyone is unique and created in God's image. We enable all to achieve their God-given potential; to grow, learn and aspire; to transform their lives and the lives of others and to journey in faith without limits within a unified, respectful and harmonious community.

Contact Details

Telephone 01902 558333

Miss Joy Langley Interim Principal

E-mail admin@kingswolverhampton.co.uk



[kingswolverhampton](https://www.facebook.com/kingswolverhampton)

[@kingsschoolwlv](https://twitter.com/kingsschoolwlv)